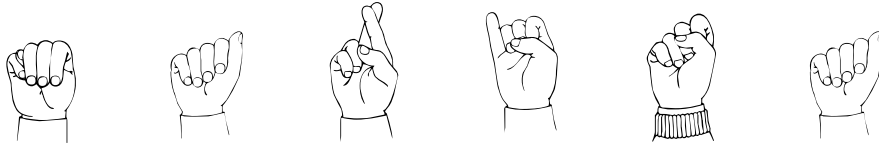
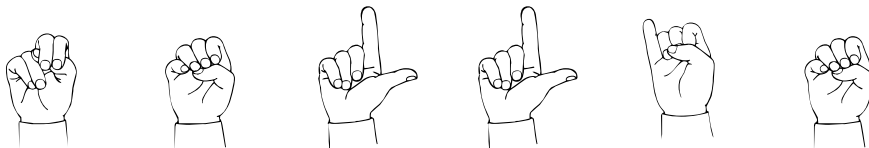


M a r i s a



N e l l i e



How to make name/fingerspelling cards:

1. Insert a one column table into the document.
2. Use *Ball-and-Stick* font (or similar, such as *Century Gothic*) for letters in approximately size 80-90 font, bold. Size will depend on length of name.
3. Place a space between each letter.
4. For fingerspelling underneath, use font *Fingerletters* in approximately size 90 (or a size that matches the letters above it). Center justify. For ease in reading, do not bold the *fingerletters*.

The *Fingerletter* font may be purchased from Educational Fontware, Inc. 1-800-806-2155. Go to www.educationalfontware.com , on left side of page click on "Buy New Academic Single User License", in center of page, scroll down to "Nellie Edge Special - Finger Letters only, no CD, \$5." Click on "Buy Now" (with credit card.)